

## Theme 2 Jobs, Skills & Prosperity

### MSG Programme Period 8 (Jul-Sep 2017) Performance Report

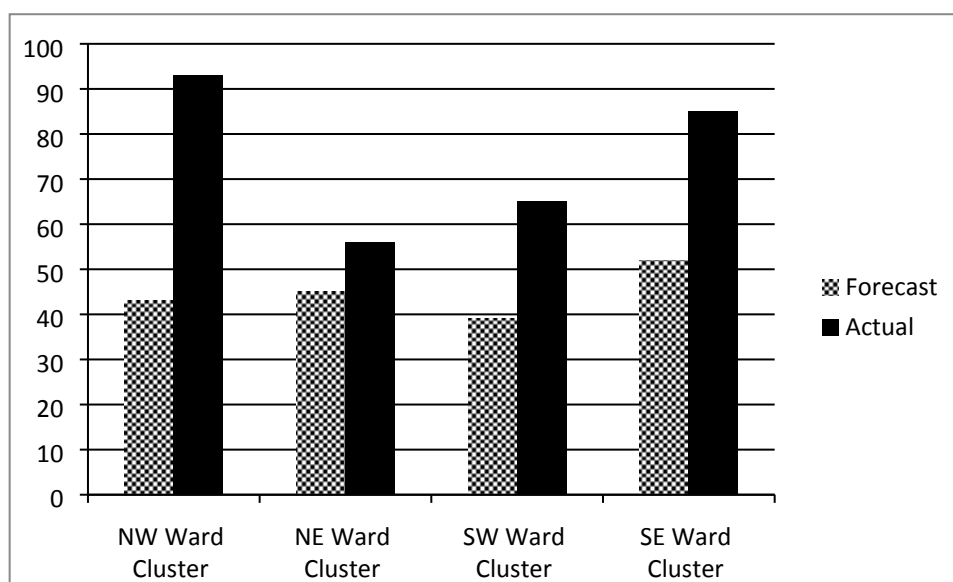
**Theme 2 – Jobs, Skills & Prosperity:** This theme focuses on seeking key outcomes including:

- Measurable increase in the numbers of people moved closer to the labour market and prepared for sustained employment.
- Reduce the numbers of residents in the borough with no qualifications or training
- Improved integration of pathway to work employment support services
- Reduction in numbers of residents negatively impacted by welfare reforms
- Minimisation of the number of residents facing housing repossessions
- Increase in the numbers of residents supported with addressing problem debts
- Increases in number of residents on low incomes receiving their correct benefit /tax credit entitlement
- Empowering residents and building resilience

## Routeways to Employment

### Geographical Breakdown

The table below shows the number of beneficiaries supported during the period July to September 2017 by Ward Cluster:



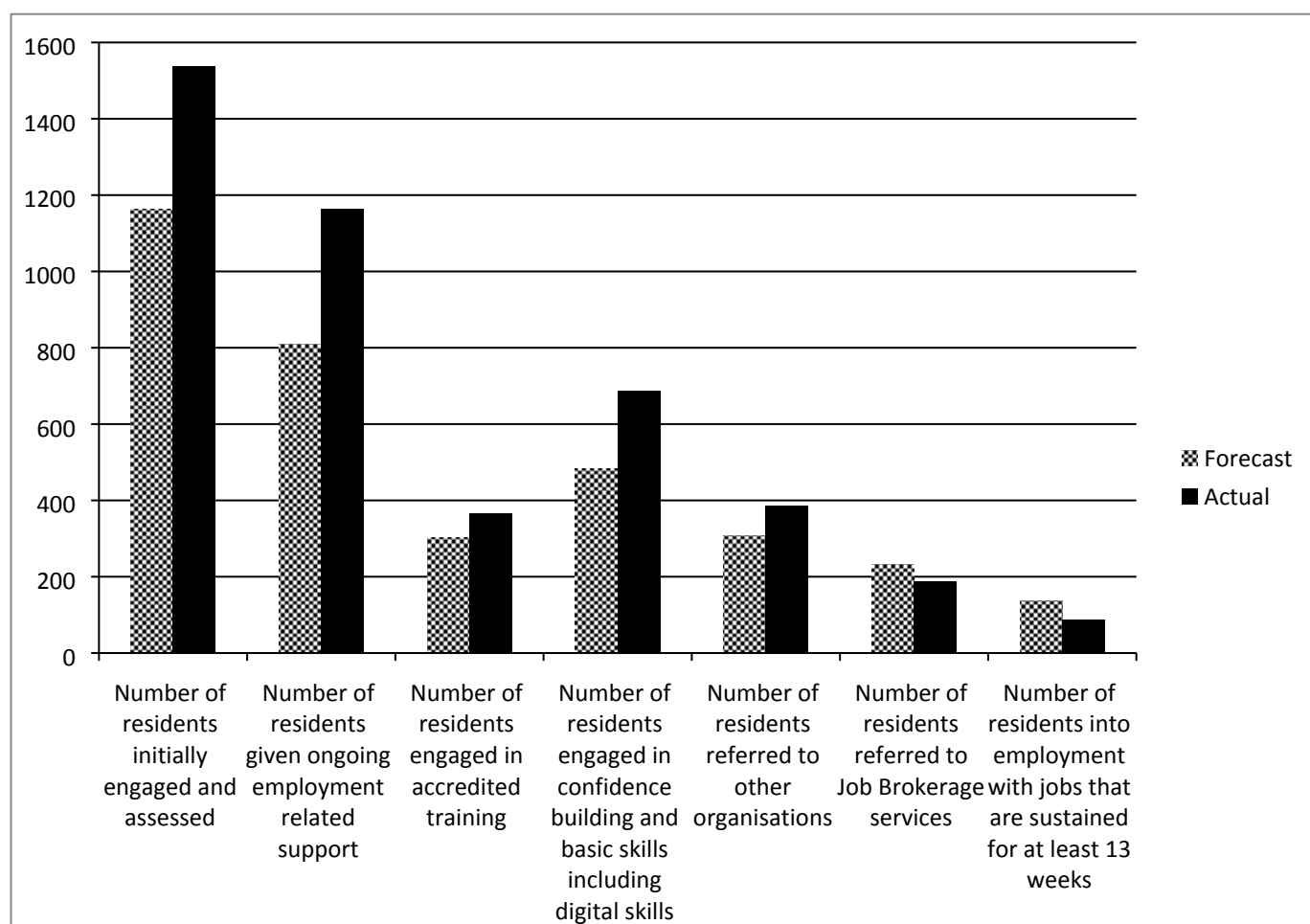
NW Ward Cluster	NE Ward Cluster	SW Ward Cluster	SE Ward Cluster
<ul style="list-style-type: none"> <li>• Bethnal Green</li> <li>• Spitalfields &amp; Banglatown</li> <li>• St Peter's</li> <li>• Weavers</li> </ul>	<ul style="list-style-type: none"> <li>• Bow East</li> <li>• Bow West</li> <li>• Bromley North</li> <li>• Bromley South</li> <li>• Mile End</li> </ul>	<ul style="list-style-type: none"> <li>• Shadwell</li> <li>• St Dunstons</li> <li>• St Katherine's &amp; Wapping</li> <li>• Stepney Green</li> <li>• Whitechapel</li> </ul>	<ul style="list-style-type: none"> <li>• Blackwall &amp; Cubitt Town</li> <li>• Canary Wharf</li> <li>• Island Gardens</li> <li>• Lansbury</li> <li>• Limehouse</li> <li>• Poplar</li> </ul>

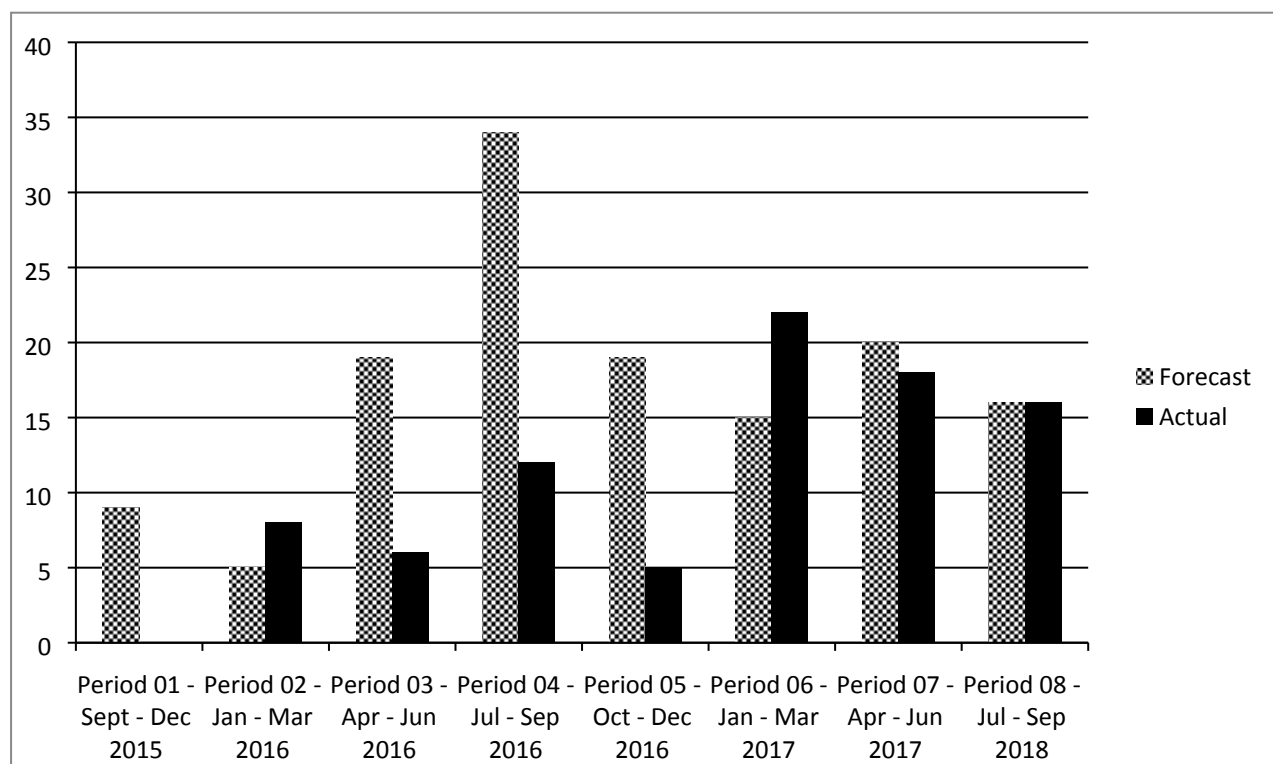
### Routeways to Employment Project Portfolio – Place

No. of live projects – Jul-Sep 2017	No. of projects classed as <b>GREEN</b>	No. of projects classed as <b>AMBER</b>	No. of projects classed as <b>RED</b>
9	9	0	0

There are 9 active projects in this category; all of which are classed as ‘Green’ and are on course to meet the agreed expenditure targets, service outputs and outcomes as indicated in monitoring reports received.

### Key Routeways to Employment outputs to date – Period 01 - 08

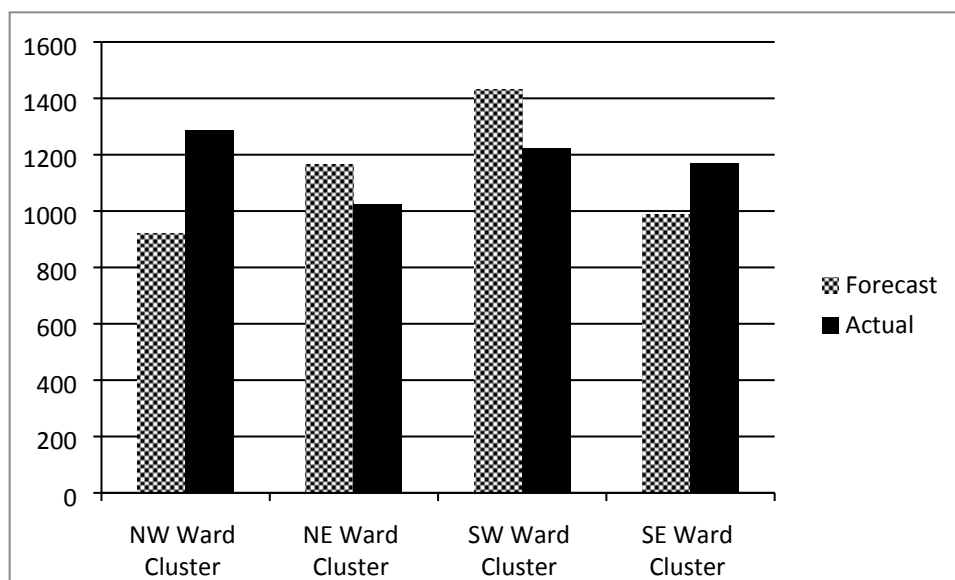


**Number of residents into employment – Period 01 – 08**

## Social Welfare Advice Services

### Geographical Breakdown

The table below shows the number of beneficiaries supported during the period July to September 2017 by Ward Cluster:



NW Ward Cluster	NE Ward Cluster	SW Ward Cluster	SE Ward Cluster
<ul style="list-style-type: none"> <li>Bethnal Green</li> <li>Spitalfields &amp; Banglatown</li> <li>St Peter's</li> <li>Weavers</li> </ul>	<ul style="list-style-type: none"> <li>Bow East</li> <li>Bow West</li> <li>Bromley North</li> <li>Bromley South</li> <li>Mile End</li> </ul>	<ul style="list-style-type: none"> <li>Shadwell</li> <li>St Dunstons</li> <li>St Katherine's &amp; Wapping</li> <li>Stepney Green</li> <li>Whitechapel</li> </ul>	<ul style="list-style-type: none"> <li>Blackwall &amp; Cubitt Town</li> <li>Canary Wharf</li> <li>Island Gardens</li> <li>Lansbury</li> <li>Limehouse</li> <li>Poplar</li> </ul>

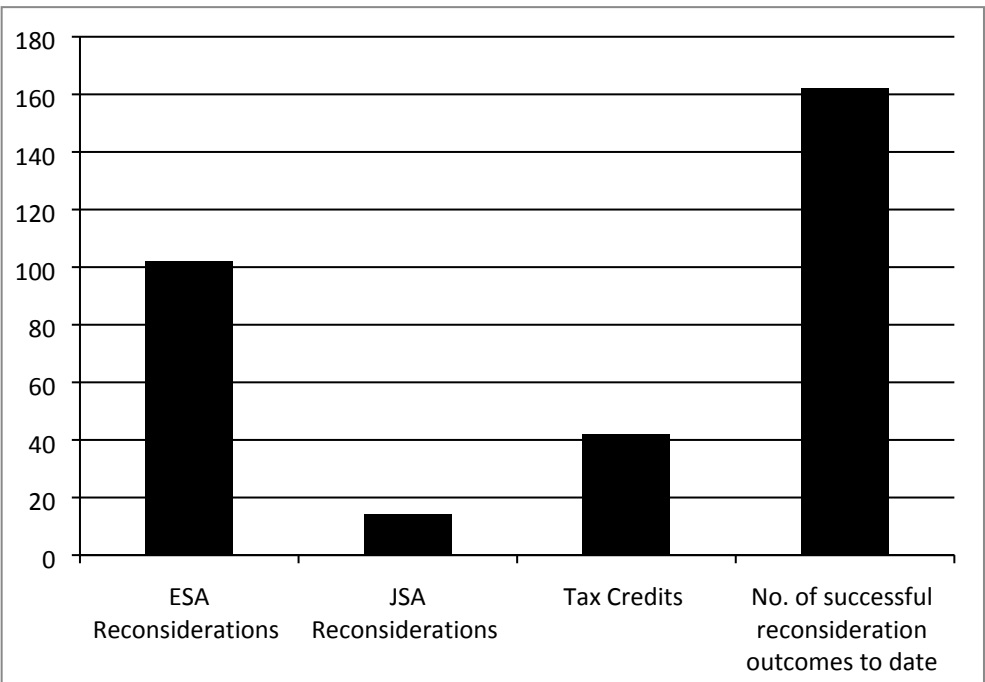
### Social Welfare Advice Services Project Portfolio – Place

No. of live projects – Jul-Sep 2017	No. of projects classed as <b>GREEN</b>	No. of projects classed as <b>AMBER</b>	No. of projects classed as <b>RED</b>
11	11	0	0

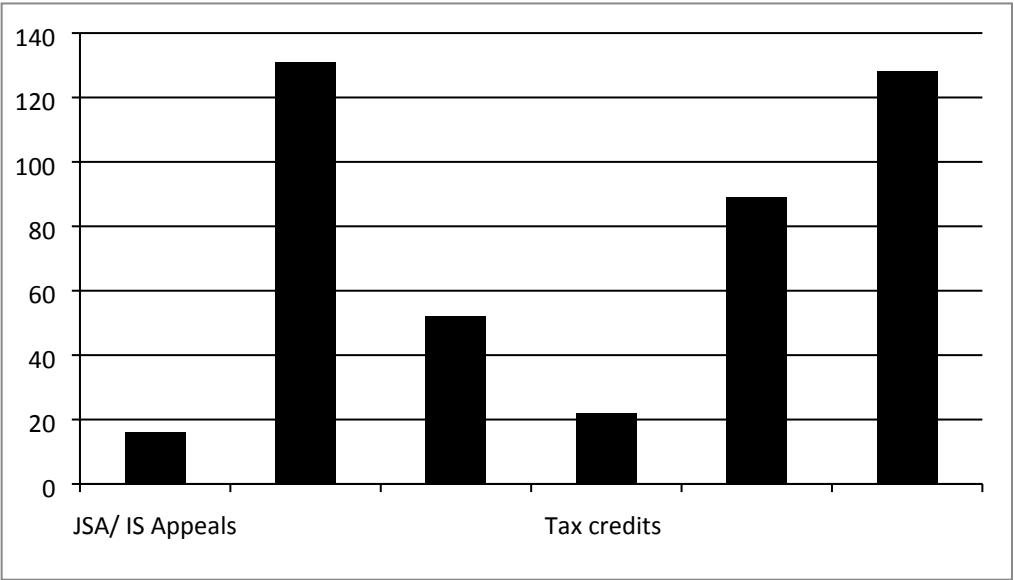
There 11 active projects in this category; all of which are classed as 'Green' and are on course to meet the agreed expenditure targets, service outputs and outcomes as indicated in monitoring reports received.

Key Social Welfare Advice outcomes achieved in the quarter include:

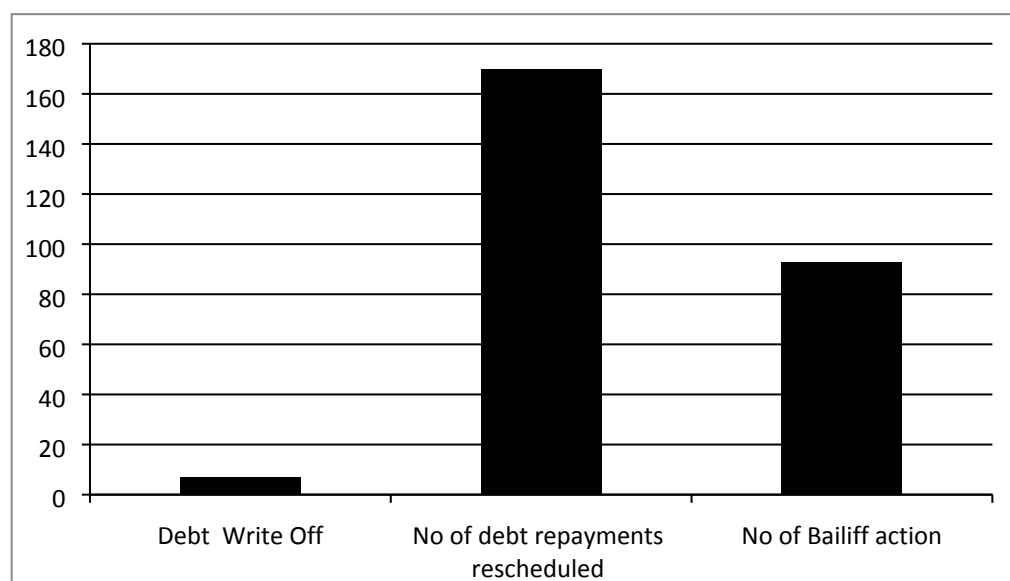
Number of Reconsiderations



Number of Appeals



### Debt Outcomes



### Housing Outcomes

